



# TH-HCM3

by Solucinde

## THROUGH HOLE MACHINES



Created and designed by

# Content

THIM3A Axial insertion machine.....	2
THIM3R Radial insertion machine.....	3
THIM3P Pin insertion machine.....	4
THIM3T Terminal Insertion machine.....	5
THIM3C Connector insertion machine.....	6
THIM3-OF3S Odd form insertion machine...	7
THIM3-TM Cutting, preforming and repacking machine.....	8

# THIM3A: Axial insertion machine

The online axial insertion machine automatically inserts various axial components and jumper wire into the printed circuit board (PCB) according to the set program of different products, with corner fixing and detection functions, achieving high-speed, high-precision and highly stable insertion effects.

## Machine Size:

L1700 x W2320 x H1593 mm

## Machine Weight:

1800 kg

## Insertion Angle:

5.5 - 18mm or 5 - 25 mm

## Component packaging method:

Components must be in tape.

## Lead span:

5.0-20mm, jumper wire  
5.0-25mm

## Substrate Size:

Minimum 100x100mm  
Maximum 330x300mm

## Substrate thickness:

0.79-2.36mm

## Component Lead Cutting:

1.2 - 2.2 mm

## Power Supply:

Single phase 220V/AC,50/60 HZ, 2KVA

## Air Supply:

0.6-0.8 Mpa

## Air Consumption:

0.2 m3/min

## Hole position correction method:

Machine vision system,  
multi-point Mark vision  
correction

## Driving system:

AC servo, AC motor

## Workbench operation mode:

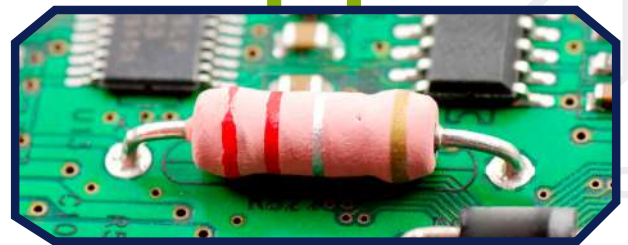
X, Y axis direction

## Board Loading:

Manual/Auto

## Programming:

Manual/Auto



## THIM3A



CHECK THE VIDEO

Learn more on [solucinde.com](http://solucinde.com)

# THIM3R: Radial insertion machine

In-line radial component insertion machine with SMEMA protocol. It allows the insertion by means of carry clip and heads with 360° rotation with 1° increment. The insertion speed is 20,000 / hour. Supports available components: capacitor, transistor, LED lights, key switch, resistor, connectors, connectors, LED lights, key switch, resistor resistors, connectors, fuse blocks and other materials packaged with tape.

## Machine Size:

L1992 x W1820 x H1593 mm

## Machine Weight:

1500 kg

## Inline Board Feeding Height:

0.79 - 2.36 mm

## Component packaging method:

Components must be in tape package

## Feeder Station:

10/15/20/40/80 (options)

## Component Lead Cutting:

1.5 +/- 0.3 mm or 2.0 +/- 0.3 mm

## Feeder Dimension:

300 x 63 x 42 pcs

## Board Size Available:

350 x 280

## Power Supply:

220V, AC (Single Phase)  
50/60HZ, 2.0KVA

## Air Supply:

0.6 - 0.8 Mpa

## Air Consumption:

0.3 m3/min

## Hole position correction method:

Machine vision system, multi-point MARK vision correction

## Board Loading:

Manual/Auto(Options)

## Programming:

Online editing

## Noise:

60



## THIM3R



CHECK THE VIDEO

# THIM3P: Pin insertion machine

In-line pin insertion machine with SMD protocol. It has a capacity of up to 4 heads to guarantee a mix of components. It has panasonic servo motors with controllers. Insertion speed is 6000/hour, supports bulk feeding with two vibratory rates and two tape inputs according to vibrator and two inputs for tape according to the presentation of the components

## Machine Size:

L1700 x W1300x H1600 mm

## Machine Weight:

1200 kg

## PCB Size:

330 x 280 (Customized)

## Number of insertion heads:

1-4 Optional

## Terminal Thickness:

0.5-1.2 mm

## Vertical error:

0.8°

## Insertion angle:

360° (increment 1°)

## PCB requirements:

The insertion hole is 0.5 +/- 0.1 large than thw component foot

## Body distance:

The distance between the components 2mm

## Clinch:

Inward clinching/ Outward clinching/ 'N'

## Display system:

17- inch color LCD monitor

## Feeding system:

Tape feeder or Bowl feeder + feeding guide

## Motion accuracy:

0.001 mm/ pulse

## Programming function:

Online visual programming, visual correction, Excel

## Communication interface:

RS-232 (can be connected to MES system)

## Motion System:

Panasonic controller, motor

## Power:

Sigle 220V / AC, 50/60HZ, 2KVA



# THIM3P



CHECK THE VIDEO

# THIM3T: Terminal insertion machine

The online terminal insertion machine automatically inserts various specifications of terminal components into printed circuit boards (PCBs) according to the set program of different products, with corner fixing and detection functions, achieving high-speed, high-precision, and highly stable insertion effects. The machine have with SMEMA protocol. Allows insertion with 360° rotation with an increment of 1°, it has a capacity of up 4 heads.

Visual programming system RS-232 (can be connected to MES system), communication interface. The speed of insertion of terminals is 0.6 seconds and the distance between components is 2mm. The power supply of the terminals can be in bulk or tape.

## Machine Size:

L1750 x W1350 x H1750 mm

## Machine Weight:

1500 Kg

## Insertion angle:

360° (increment 1°)

## Component packaging method:

Jointly, in rolls, in bulk

## Terminal Thickness:

0.6 - 1.2 mm

## Air pressure:

5-6kg/cm<sup>2</sup>

## PCB requirements:

The edge of the backup plate needs to positioning hole the component aperture is 0.5mm larger that the component foot.

## PCB Size:

Max 380x280 Min50x50mm  
(Customized)

## Body distance:

The distance between the components 2 mm

## Display system:

17 - inch color LCD display

## Number of insertion heads:

1 - 4 (Optional)

## Material supply method:

Bowl feeder, Packaging in rolls /continuous feeders

## Motion accuracy:

0.001 mm/ pulse

## Motion System:

Panasonic servo controller, motor

## Programming function:

Online visual programming, visual correction and simple Excel spreadsheet process

## Data Import:

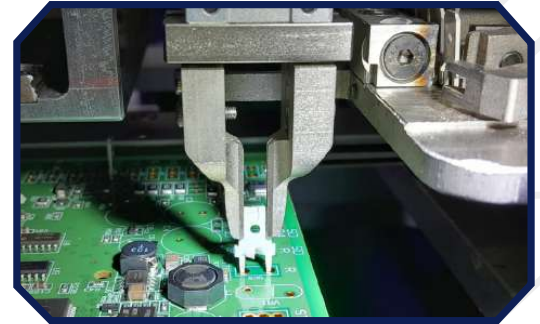
USB interface import, manual entry

## Communication interface:

RS-232 (can be connected to MES system)

## Power:

Sigle 220V / AC, 50/60HZ,  
2KVA



## THIM3T



CHECK THE VIDEO

# THIM3C: Connector insertion machine

In-line connector component insertion machine with SMEMA protocol. It has a capacity of up to up to 4 heads to speed up the insertion process and an insertion speed of 16000 /hour. Each head allows insertion from 0° to 90° with an increment of 1°. It has an insertion inspection chamber. Component feeding is in bulk.

## Machine Size:

L1700 x W1300 x H1600 mm

## Machine Weight:

1200 Kg

## Insertion angle:

360° (increment 1°)

## PCB Size:

330 x 280 (Customized)

## Number of insertion heads:

1 - 4 Optional

## Terminal Thickness:

0.5 - 1.2 mm

## Vertical error:

0.8°

## PCB requirements:

The insertion hole is 0.5 +/- 0.1 large than thw component foot

## Body distance:

The distance between the components 2 mm

## Clinch:

Inward clinching/ Outward clinching/ 'N'

## Humidity:

30% - 70%

## Display system:

17 - inch color LCD monitor

## Feeding system:

Tape feeder or Bowl feeder + feeding guide

## Motion accuracy:

0.001 mm/ pulse

## Motion System:

Panasonic controller, motor

## Programming function:

Online visual programming, visual correction, Excel

## Data Import:

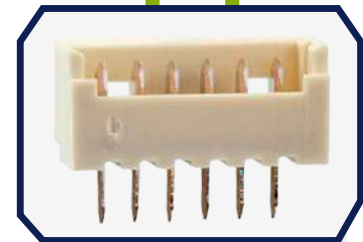
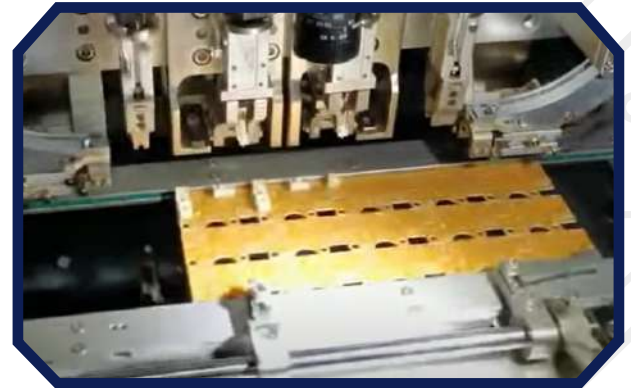
USB interface import, manual entry

## Communication interface:

RS-232 (can be connected to MES system)

## Power:

Single 220V / AC, 50/60HZ, 2KVA



## THIM3C



CHECK THE VIDEO

# THIM3-OF3S: Insertion of Odd Form Components

In-line odd form component insertion machine with SMEMA protocol. It has a capacity of up to 4 heads to guarantee a mix of components. It has panasonic servo motors with controllers. Insertion speed is 6000 /hour, supports bulk feeding with two vibratory rates and two tape inputs according to vibrator and two inputs for tape according to the presentation of the components

## Machine Size:

1780 x 1500x 1600 mm

## Machine Weight:

1800 kg

## Insertion Angle:

5.5 - 18mm or 5 - 25 mm

## Board Size Available:

330 x 280 (Customized)

## Inline Board Feeding Height:

900 +/- 20 mm

## Board Thickness:

0.79 - 2.36 mm

## Component Type:

Components must in tape package

## Jumper Wire Insertion:

Options

## Component Lead Cutting:

1.2 - 2.2 mm

## Lead Bending:

Yes

## Feeder Station:

20/30/40/50/60/70/80/90/100

## Power Supply:

220V, AC 50/60 HZ, 1000VA

## Air Supply:

0.55 +/- 0.1 Mpa

## Air Consumption:

0.2 m3/min

## Noise:

65

## Calibration:

Machine vision system, multi-point Mark vision correction

## Data Input:

USB

## Operation Mode:

Auto/semi-automatic/manual

## Worktable Rotate:

X, Y axis direction

## Board Loading:

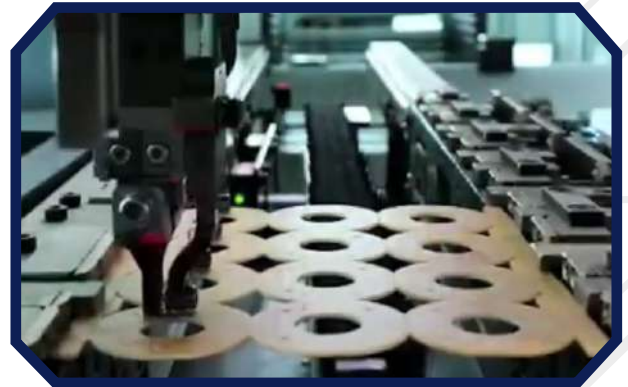
Manual/Auto

## Programming:

Manual/Auto

## MES(Y/N):

Options



# THIM3-OF3S



# THIM3-TM: Cutting, preforming and repacking machine

Component taping machine. The feeding is in bulk and the taping speed is 180 to 230 components per minute. It has double missing component detection system, servo motor control system, visual programming in English and USB data input interface. and USB data input interface. It performs cutting and preforming. It has an electrical tester for the validation of validation of the operation of the components.

## Machine Size:

2300 x 1000 x 1500 mm

## Machine Weight:

800 Kg

## Power:

220V, 50-60 Hz

## Components:

Electrolytic capacitor, LED, inductor, ceramic capacitor, varistor, transistor, fuse, resistors, touch switch, plastic and metal terminal parts

## Cutting length:

2.5 - 28 mm

## Air supply:

4 Mpa

## Cutting form:

2.0 mm, 2.5 mm, 5 mm, 7.5mm, 10 mm o 15 mm, 20 mm, 25 mm

## Speed:

180 - 300 pcs / min

## Type of shape:

Inner fold, outer fold, fold back, etc.



# THIM3-TM



CHECK THE VIDEO

Learn more on [solucinde.com](http://solucinde.com)

# THIM3

by Solucinde

## DIRECTORY

 ING. JUAN DAVID VICENCIO  
 +52 1 899 318 2693  
 [juan.vicencio@solucinde.com](mailto:juan.vicencio@solucinde.com)

 ING. AGUSTIN MARCELINO  
 +52 1 899 219 6674  
 [agustin.marcelino@solucinde.com](mailto:agustin.marcelino@solucinde.com)

## Contact



Distribution throughout  
Mexico and the USA

 +52 899 318 3987

 +1 956 613 0522

SOLUCINDE LLC  
2005 e. Griffin pkwy suite 265,  
Mission, Texas

MAHA SOLUCIONES INTEGRALES  
Zacatecas 503.A, Col. Lampacitos,  
Reynosa, Tamaulipas, CP: 88780  
[administracion@solucinde.com](mailto:administracion@solucinde.com)

Created and designed by